

VIRTUAL IMAGING  
A CANON COMPANY

**Canon**

# THE BRILLIANTLY SIMPLE DR TABLET SOLUTION

Tablet | Detector | Software



*DR Tablet Solution  
CXDI-701C Wireless Detector shown  
w/optional battery charger*

**MAKE THE MOVE TO DIGITAL RADIOGRAPHY**



## DR TABLET SOLUTION

Easily make the move to digital radiography

The Solution consists of a tablet\* and choice of a wireless CXDI Digital Radiography (DR) System, which includes CXDI Control Software NE. The CXDI Control Software NE features an auto-detection mode that allows the CXDI detector to automatically detect X-rays for exposure without the use of a typical X-ray generator interface and cables.

### TABLET

- Optional 2-bay battery charger and dual capacity battery pack for extended use
- Hand Strap (included) allows for easy, safe handling on the go
- Hot swappable battery design lets you replace a depleted battery with a fresh one without powering down
- Connect the CXDI Wireless Digital Radiography System in 2.4GHz or 5GHz and choose your channel

## CXDI WIRELESS DR SYSTEMS

Canon Inc. introduced the world's first digital radiography detector

Known worldwide for image quality, Canon Inc. pioneered DR technology with the introduction of the world's first digital radiography detector in 1997 and has sold over 30,000 detectors worldwide! \*\*

Canon CXDI DR Systems are designed to help healthcare professionals attain a high level of performance, usability, and reliability. By utilizing technology and solutions that help accelerate exams and maintain productive workflow, practitioners can increase productivity while providing quality care.

\*\*Includes sales to affiliates

### CANON PROPRIETARY TECHNOLOGY

The CXDI DR Systems incorporate the Canon LANMIT® (Large Area New Metal-Insulator Semiconductor) technology and a proprietary glass substrate for high-resolution, high-contrast images. The CXDI Wireless DR Systems have a CsI scintillator that optimizes light channeling and produces high-quality images at a low X-ray exposure to the patient.



#### CXDI-401C Wireless Digital Radiography System

---

##### Designed to Expand Imaging Capabilities

Created for full-field imaging and the largest of the CXDI Wireless Systems, the CXDI-401C DR System offers a large imaging area without the need to rotate the detector.



#### CXDI-701C Wireless Digital Radiography System

---

##### Designed to Work in Your World

Ideal for various diagnostic imaging areas and radiology rooms, this system provides wireless freedom, flexibility, and ease of use.



#### CXDI-801C Wireless Digital Radiography System

---

##### Designed to Work in Small Places

Designed for use in a variety of diagnostic imaging areas and radiology rooms, this system is the ideal size for fitting into most wall stands, buckeyes, mobiles, and incubators without modification.

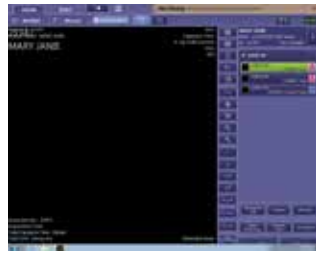
All Canon Wireless Digital Radiography Systems incorporate customer-focused features, such as enhanced liquid intrusion protection, high pixel resolution, and impact detection.

\*Manufactured by a third party

# CXDI CONTROL SOFTWARE NE

Software designed to streamline workflow and reduce the steps needed to complete exams.

Made exclusively for use with Canon Digital Radiography Systems, this software helps to optimize workflow. It provides quick image confirmation and timely network distribution, supports multiple study acquisition, can be easily tailored to individual clinical preferences, and helps provide the delivery of consistent, high-resolution images with the Canon CXDI Digital Radiography Systems. In addition, this proprietary software solution is Integrating the Healthcare Enterprise (IHE) Compliant and has features that can help practitioners with their HIPAA compliance efforts.



## STREAMLINED WORKFLOW

Streamlined workflow is standard with Canon CXDI Control Software NE. The software contains features such as procedure code mapping and auto-next protocol selection. These pre-packaged features help streamline today's workflow by reducing the steps needed to perform the examination.



Image taken without Scatter Correction



Image taken with Scatter Correction

## SCATTER CORRECTION

This optional feature eliminates the need to use an anti-scatter grid during certain types of X-ray examinations. The result is an image with reduced scatter and increased contrast, as compared to an image taken with the same detector with a grid.



## STITCHING

Normally an industry add-on, stitching comes standard with the CXDI Control Software NE. Stitching allows up to four images to be combined into one large image to assist with diagnosis (e.g. spine, legs, etc.).



Image taken with EVP feature

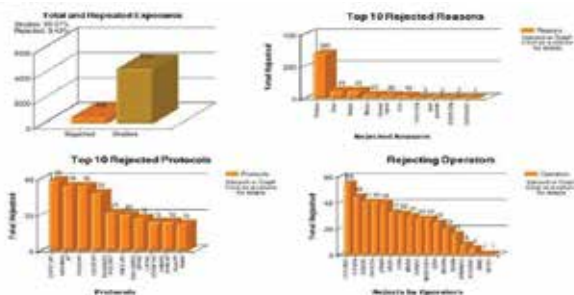


Image taken without EVP feature

## ENHANCED VISUALIZATION PROTOCOL (EVP)

EVP enhances fine lines to allow clinicians to accurately view PICC lines, catheters, etc. And best of all, it comes standard with CXDI Control Software NE.

All images are simulated



For illustration purposes only

## REJECT ANALYSIS MODULE

This optional reporting tool created by Virtual Imaging, Inc. (sold separately) allows facilities to chart, graph, and analyze feedback on the amount of rejected images/exposures, generated by the CXDI Control Software NE.

TABLET SPECIFICATIONS	
Operating System	Windows® 7 Professional 64-bit
CPU	Intel® Core™ i5-5350U vPro™ 1.8GHz processor (Broadwell 5th generation)
Memory	8GB DDR3L
Storage	256GB mSATA SSD
Display	<ul style="list-style-type: none"> <li>• 10.1 in WUXGA (1920 x 1200), 1000 nits sunlight readable</li> <li>• 10-point capacitive touch supports glove touch, water rejection, palm rejection, 2mm hard tip stylus</li> <li>• Gorilla Glass3</li> </ul>
Graphic	Intel i5-5350U: Intel HD Graphics 6000
RF	Wi-Fi 802.11 a/b/g/n/ac Bluetooth V4.0
Data Collection	2D barcode reader
Control Button	Barcode trigger x 1 Power, volume
Sensor	Gyroscope, G-sensor, E-compass, light sensor
Power Adapter	AC 100V~240V, 50~60Hz Input; 19VDC@3.42A, 65W
Battery	Standard : 4500mAh, 10.8V, hot swappable battery
Dimensions and Weight	11 in x 7.7 in x 0.9 in (28 cm x 19.5 cm x 2.3 cm) 3.0 lbs (1.36 kg)
LED Indicator	<ul style="list-style-type: none"> <li>• Power on/off</li> <li>• Wi-Fi on/off</li> <li>• Fn on/off</li> <li>• Battery full /charging/low</li> </ul>
Additional Features	IP65, MIL-S TD-810G, shock & vibration, 5 feet drop

Environment	<ul style="list-style-type: none"> <li>• Operating temperature -4° F to 140° F (-20° C to 60° C)</li> <li>• Storage temperature -22° F to 158° F (-30° C to 70° C)</li> <li>• Humidity 5%-95%</li> </ul>														
Security	TPM 1.2														
Accessories	<table border="0"> <tr> <td>INCLUDED:</td> <td>OPTIONAL:</td> </tr> <tr> <td>• Pen</td> <td>• 2-bay Battery</td> </tr> <tr> <td>• Hand strap</td> <td>• Charger</td> </tr> <tr> <td>• Shoulder strap</td> <td>• Additional battery</td> </tr> <tr> <td>• Handle</td> <td></td> </tr> <tr> <td>• Power adapter</td> <td></td> </tr> <tr> <td>• Desktop Dock</td> <td></td> </tr> </table>	INCLUDED:	OPTIONAL:	• Pen	• 2-bay Battery	• Hand strap	• Charger	• Shoulder strap	• Additional battery	• Handle		• Power adapter		• Desktop Dock	
INCLUDED:	OPTIONAL:														
• Pen	• 2-bay Battery														
• Hand strap	• Charger														
• Shoulder strap	• Additional battery														
• Handle															
• Power adapter															
• Desktop Dock															

## Canon CXDI Wireless Digital Radiography Systems

The DR Tablet Solution is available with a choice of these CXDI Wireless Digital Radiography Systems

### CXDI-401C WIRELESS Digital Radiography System

Image Area	17 in x 16 in
Weight	8.4 lbs w/ battery
Pixels	3,408 x 3,320
Pixel Pitch	125 microns
A/D	16-bit
Grayscale Output	12-bit or 16-bit

### CXDI-701C WIRELESS Digital Radiography System

Image Area	14 in x 17 in
Weight	7.3 lbs w/ battery
Pixels	2,800 x 3,408
Pixel Pitch	125 microns
A/D	16-bit
Grayscale Output	12-bit or 16-bit

### CXDI-801C WIRELESS Digital Radiography System

Image Area	11 in x 14 in
Weight	5.1 lbs w/ battery
Pixels	2,192 x 2,800
Pixel Pitch	125 microns
A/D	16-bit
Grayscale Output	12-bit or 16-bit

VIRTUAL IMAGING

A CANON COMPANY

**Canon**

**Xi**

**XTRON IMAGING INC.**

405 Britannia Rd E., Units 11-12  
Mississauga, ON L4Z 3E6

**T** (905) 670-5051 **F** (905) 670-5053

**E** sales@xtronimaging.com

[www.xtronimaging.com](http://www.xtronimaging.com)